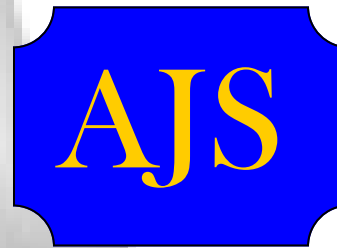




Adolph Johnson & Son Co.
3497 Union Street
Mineral Ridge, Ohio 44440



News and Views

You build your business, we'll build your building

Vol-21 Issue #1

Winter 2021

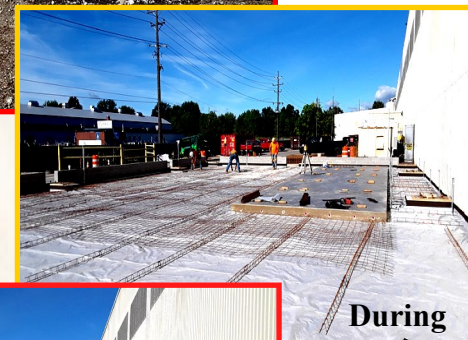
The Wheatland Tube Company

The Wheatland Tube Company, A Division of Zekelman Industries awarded the Adolph Johnson & Son Co. the contract to construct a new 13,000 square foot Maintenance Building located at 901 Dietz Rd. NE in Warren, Ohio. The facility stands 36 feet high, 260 feet long, and is constructed of high strength structural steel tube columns, I-beams, steel bar joist, painted metal siding, vinyl backed wall insulation, and an Insulated EPDM rubber roof system. All building components are materials Made in the USA. The building meets or exceeds all building industry standards for R-values and approved Com Check reports.

The interior consists of a men's and ladies rest room, two mezzanine offices, 8" and 12" reinforced concrete floors, 5 Ton overhead Crane, fully automated 30 foot Kardex shelving unit for parts, storage and inventory. The facility will assist in the maintenance and repair of various plant equipment and the 77,000 pound side loading fork lifts used to stage steel coils and various new pipe products manufactured at the plant.



Project Manager: Bob Pirock
Jobsite Manager: George Bowlen
Architect: DPH Architecture



Jackson RR Park



Adolph Johnson & Son Co. is wrapping up the details for the 16,000 square foot light industrial facility in North Jackson, OH. Jackson RR Park's first tenants, Forever Concession Trailers and Youngstown Powder Coating are starting the process of bringing in their equipment in order to start operating out of the space. We are sure they will find their new space a great place to work.

Jobsite Manager: Doug Blakley
Project Manager: Jon Locketti

** Adolph Johnson & Son Co. is both happy and proud to again receive a maximum discount rating at the Bureau of Workers Compensation based on our excellent safety record!*

PROUD MEMBER OF:



ADOLPH JOHNSON & SON CO.
General Contractors—Design Builders
3497 Union Street Mineral Ridge, OH 44440
Phone: 330-544-8900 * Fax: 330-544-0753
adolphjohnson.com



Keep Roof Clear from Snow Hazards

Roof snow accumulations in excess of specified project design loading criteria can cause significant distress to your building structural system. Snow will build up in areas around firewalls, parapet walls, valleys, dormers, and on lower roof levels where a roof step occurs. Since the density of weather conditions during and after a snow fall, it is not possible to determine a single value for the allowable height of snow that a building can safely support.

In addition, the underlying snow density increases due to melting from the building heat loss and as water is absorbed from the melting snow above. As weather and temperature changes continue, ice may build up under the snow layers, further increasing the building roof loading intensity. This ice buildup also causes additional water back-up on the roof deck.

The most severe condition occurs when rain falls on a roof system already loaded by snow. In this case, the snow absorbs the rainwater, and loads can approach the weight of water (62.4 pounds per cubic foot, or 5.2 pounds per inch of depth). This condition must be monitored with extreme caution.

Snow Removal:

The following procedure may be used as a guideline for responding to roof overload conditions due to extreme snow and ice buildup conditions:

1. Visually inspect the roof system to identify unusual deflections of frames, purlins, or joists. Starting in this area, remove approximately one-half of the snow depth in a pattern that does not cause an unbalanced loading condition on the frames or purlins.
2. In general, shoveling pattern should progress from each end wall of the building towards the center. On larger roof areas, additional people working from the center of the building to the ends is recommended.
3. Along the building width, remove snow from the eave towards the ridge, sliding the snow off the roof over the gutter. On gabled buildings, remove the snow on both sides of the ridge at the same time.
4. Remove the remaining half of the snow depth in the same manner as described above.
5. Never use metal shovels or "scrape" the roof down to the surface of the panel. Remember, the objective is to relieve the excess loading condition due to the weight of the snow, not to completely clear the roof panel of all snow and ice. Attempting to scrape the roof will result in broken fasteners and loose cinch straps, creating roof leaks.
6. Keep gutters, downspouts and roof drains open and free flowing to prevent water back up and ice buildup on the roof system. Ice damming conditions are especially likely on the north side of a building and in shaded areas. Installing heat tape in gutters and downspouts can also be used as a precaution, however, heat tapes may not be 100% effective in extremely low temperatures and should be checked regularly.
7. Watch for extreme deflections and listen for unusual noises when snow and ice buildup conditions exist.

Safety Guidelines:

1. Always provide proper safety precautions when working on the roof.
2. Pay special attention to and be aware of Translucent Roof Panel locations. These panels are not intended to support roof foot traffic loads.
3. Be cautious of snow or ice breaking away and sliding down the roof, even on low slope buildings. Metal roof systems are extremely slippery when wet. It may be necessary to locate ladders at the end of the building to avoid sliding snow.
4. Use extreme care when working along the edge of the roof.
5. Never send one person alone on a roof to remove snow.

Nucor Building Systems does not make any recommendation on when to remove snow from roofs. It is up to the individual property owner to consider the benefits and dangers of snow removal and decide their own course of action. Remember to consider the depth and relative moisture content of your snow and capacity of your roof structure in making your decision to remove snow or not.



President's Ponderings

What an interesting year! All kinds of out of the ordinary goings on. Probably at the top of the list is the VIRUS. It has struck fear through out the population, wreaked havoc on the economy and evoked some strange actions.

Strange? How about the issuing of regulations that are unenforceable (i.e. no more than 6 people at your home for Thanksgiving dinner or if you cross a state line you must self quarantine for 14 days). Who would award an Emmy to a politician that dictated people with the virus be admitted to nursing homes and demanded 40,000 ventilators, but used less than 4,000? How about a governor who prohibited people from buying seeds for their gardens being considered for the cover of Time magazine?

Then there is the election. This one should turn the strategy of running for an elected office on its head. Here are some facts to consider. In 2012, a fairly typical election, 51.4% of the people over 18 voted in the Presidential Election. In 2016, a hard fought and emotional election, 54% of the population over 18 voted. In 2020 one of the candidates for all practical purposes sat out the campaign, yet, 61.4% of those over 18 voted. The 2016 Democratic candidate after mounting a strong and vigorous campaign claimed almost 66 million votes. In 2020 the Democratic candidate stayed at home and captured over 80 million votes, a 21.8% increase. It seems clear that the most effective way to garner votes is to stay at home, lay low, say little, and reap the benefits.

It is likely the year 2020 will have brought about some lasting effects. People will have learned to appreciate some things that were taken for granted and became aware of some things they can do without.

Maybe the world will end up a better place as the result of the year 2020. Here's hoping.

Enjoy the Holidays,

Paul A. Johnson Jr.

It is with your aid, as the people, that I think we shall be able to preserve - not the country, for the country will preserve itself, but the institutions of the country - those institutions which have made us free, intelligent, and happy - the most free, the most intelligent, and the happiest people on the globe.

~Abraham Lincoln~

Night Before Christmas

**T'was the night before Christmas
And all through the town,
People wore masks,
That covered their frown**

**The frown had begun
Way back in the Spring,
When a global pandemic
Changed everything**

**They called it Corona,
But unlike the beer,
It didn't bring good times,
It didn't bring cheer.**

**Contagious and deadly,
This virus spread fast,
Like a wildfire that starts
When fueled by gas.**

**Airplanes were grounded,
Travel was banned.
Borders were closed
Across air, sea, and land.**

**As the world entered lockdown
To flatten the curve,
The economy halted,
And folks lost their nerve.**

**From March to July
We rode the first wave,
People stayed home,
They tried to behave.**

**When summer emerged
The lockdown was lifted.
But away from caution,
Many folks drifted.**

**Now it's November
And cases are spiking,
Wave two has arrived
Much to our disliking.**

**Frontline workers,
Doctors and nurses,
Try to save people
From riding in hearses.**

**This virus is awful,
This COVID-19.
There isn't a cure.
Too early for vaccine.**

**It's true that this year
Has had sadness a plenty,
We'll never forget 2020.**

**And just 'round the corner -
The holiday season,
But why be merry?
Is there even one reason?
To decorate the house
And put up the tree,
When no one will see it,
No-one but me.**

**But outside my window
The snow gently falls,
And I think to myself,
Let's deck the halls!
So, I gather the ribbon,
The garland and bows,
As I play those old carols,
My happiness grows.**

**Christmas isn't cancelled
And neither is hope.**

**If we lean on each other,
I know we can cope.**

**From Facebook -
Author Unknown**